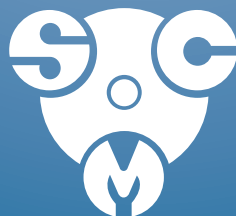
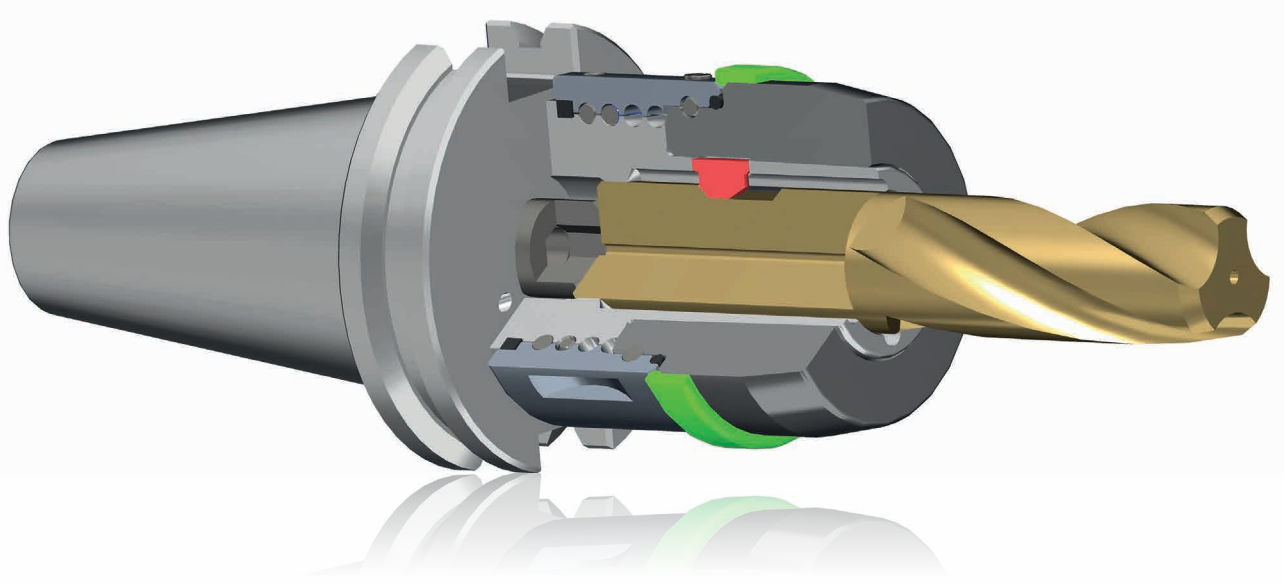


FIX-ONE

Mandrino a forte serraggio con sistema antisfilamento dell'utensile
High clamping chuck with NO-PULL-OUT device





Gli utensili di ultima generazione hanno la possibilità di adattarsi sia a lavorazioni di sgrossatura che di finitura. Il problema più temuto, soprattutto durante la grossa asportazione, è lo sfilamento dell'utensile. SCM ha sviluppato un prodotto che rende sicure tali lavorazioni grazie ad un mandrino a forte serraggio con sistema "antisfilamento", compatibile con utensili weldon standard.

Il mandrino FIX-ONE garantisce ottime prestazioni anche in lavorazioni di finitura, grazie ad elevata concentricità e bilanciatura.

Latest generation tools are able to highly perform both in roughing and finishing operations. The highest concern, above all during heavy roughing operations, is tool pull out, which can damage the work-piece and cutting tool. SCM has developed a product that makes these processes safer thanks to a "no pull-out" system which is compatible with standard weldon tools.

At the same time, the high clamping force of the FIX-ONE chuck guarantees excellent finishing performances, thanks to high concentricity and balancing.

Come funziona

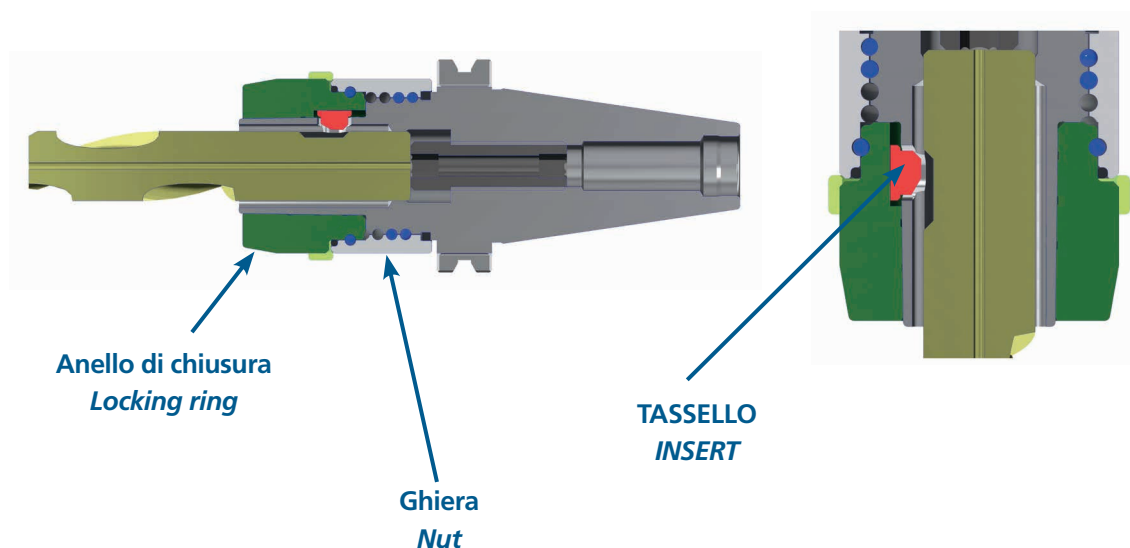
How it works

Il sistema antisfilamento utilizza un particolare tassello, che si posiziona nella sede Weldon dell'utensile, impedendone lo sfilamento.

The no-pull-out system uses a special insert which, when is positioned in the tool Weldon groove, prevents the tool pulling out.

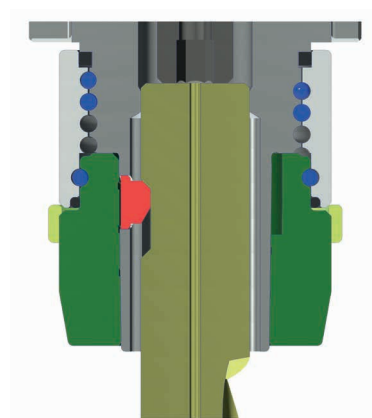
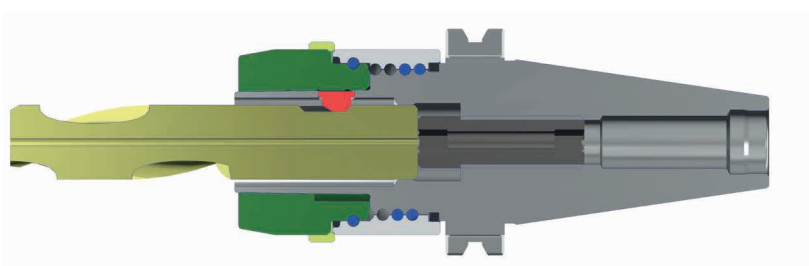
Posizione aperta: il tassello è accolto in una cava posta sull'anello di chiusura dando libertà di movimento all'utensile.

Open position: the insert is located in a slot, placed on the locking ring, allowing the end mill to move freely.







Posizione chiusa: il tassello, dopo una rotazione di 180° dell'anello di chiusura, è spinto nella sede weldon, impedendo lo sfilamento dell'utensile.

Closed position: the insert, moved to a 180° rotation of the locking ring, is pushed into the weldon seat, preventing the end mill from pulling out.



Peculiarità

Specifications

- Compatibilità con utensili weldon standard (DIN1835)
 - Tassello antisfilamento integrato (per evitare smarrimenti e garantire elevata bilanciatura)
 - Serraggio veloce e intuitivo
 - Passaggio lubrificante centrale fino a 100 bar
 - Tacche di posizionamento  (aperto)  (chiuso)
 - Run out massimo 5 μ a 2 volte il diametro utensile
 - Bilanciatura G 2,5 a 25.000 giri/minuto
-
- *Compatibility with standard weldon tools (DIN1835)*
 - *Integrated no-pull-out insert (avoids accidental loss and ensure high balancing)*
 - *Quick and easy locking*
 - *Central coolant through up to 100 bar*
 - *Reference notch  (open)  (closed)*
 - *Maximum run-out 5 μ at 2 times the tool diameter*
 - *Balancing G 2,5 at 25.000 rpm*

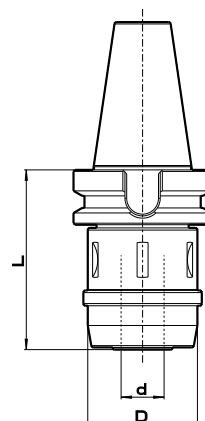
Vantaggi rispetto a portautensili weldon

- Migliore concentricità tra mandrino e utensile
 - Elevata bilanciatura
- Possibilità di utilizzo sia in sgrossatura che in finitura

Advantages compared to weldon end mill holders

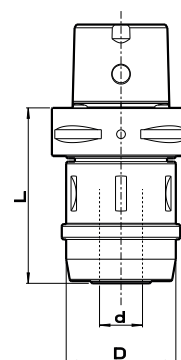
- *High concentricity*
- *High balancing*
- *Possible use both in roughing and finishing processes*

DOPPIO CONTATTO MAS BT e ISO DOUBLE CONTACT MAS BT and ISO



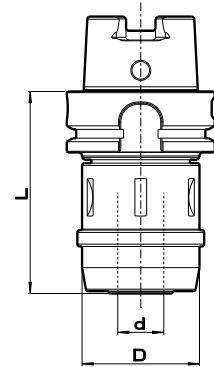
CODE	SHANK	d	L	D
FA12000/40BBP	BT 40	12	78	40
FA16000/40BBP	BT 40	16	81	45
FA20000/40BBP	BT 40	20	84	50
FA12000/50BBP	BT 50	12	89	40
FA16000/50BBP	BT 50	16	92	45
FA20000/50BBP	BT 50	20	94	50
FA12000/40ABP	ISO 40	12	70	40
FA16000/40ABP	ISO 40	16	73	45
FA20000/40ABP	ISO 40	20	76	50
FA12000/50ABP	ISO 50	12	74	40
FA16000/50ABP	ISO 50	16	78	45
FA20000/50ABP	ISO 50	20	76	50

ISO 26623-1



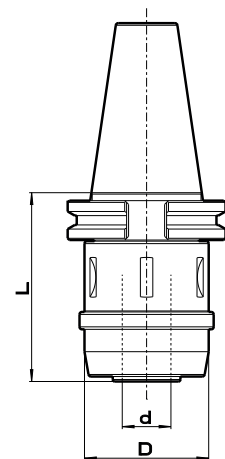
CODE	SHANK	d	L	D
FA12000/C63	C63	12	75	40
FA16000/C63	C63	16	77	45
FA20000/C63	C63	20	80	50
FA12000/C80	C80	12	81	40
FA16000/C80	C80	16	84	45
FA20000/C80	C80	20	87	50

HSK - DIN 69893 A



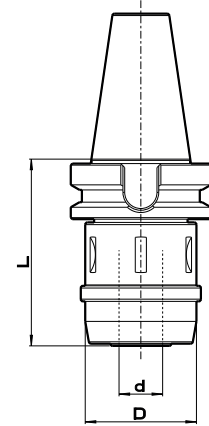
CODE	SHANK	d	L	D
FA12000/H63A	HSK-63A	12	80	40
FA16000/H63A	HSK-63A	16	83	45
FA20000/H63A	HSK-63A	20	86	50
FA12000/H100A	HSK-100A	12	95	40
FA16000/H100A	HSK-100A	16	102	45
FA20000/H100A	HSK-100A	20	105	50

ISO DIN 69871 AD+B



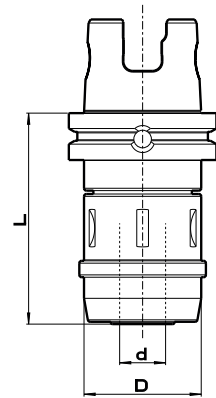
CODE	SHANK	d	L	D
FA12000/40B	ISO 40	12	70	40
FA16000/40B	ISO 40	16	73	45
FA20000/40B	ISO 40	20	76	50
FA12000/50B	ISO 50	12	74	40
FA16000/50B	ISO 50	16	78	45
FA20000/50B	ISO 50	20	80	50

MAS 403 BT-B



CODE	SHANK	d	L	D
FAI2000/40BT-B	BT 40	12	78	40
FAI6000/40BT-B	BT 40	16	81	45
FA20000/40BT-B	BT 40	20	84	50
FAI2000/50BT-B	BT 50	12	89	40
FAI6000/50BT-B	BT 50	16	92	45
FA20000/50BT-B	BT 50	20	95	50

KM63M (Mazak)



CODE	SHANK	d	L	D
FAI2000/KM63M	KM63M	12	84	40
FAI6000/KM63M	KM63M	16	87	45
FA20000/KM63M	KM63M	20	90	50



ISO 9001

BUREAU VERITAS
Certification



SCM srl

Regione Marcaveri, 39
15020 MURISENGO (AL) - ITALY
Tel. +39 0141.993.693 r.a.
Fax +39 0141.993.646
E-mail: info@scmsrl.com